

LEGEND

PRECAMBRIAN

- 25 Granitic rocks of uncertain age.
- 22 Quartz-feldspar porphyry; quartz porphyry; felsite.
- 19 Pegmatite, aplite, graphic granite.
- 18 Pink and grey aplite granite and granodiorite; some coarser phases; some alkali. (Some 14 may be included).
- 17 Grey biotite-hornblende tonalite.

SICKLE SERIES

- 14 Arkose and quartzite; feldspathic sandstone; some greywacke.
- 24 KISSEY-NEW-TYPE GNEISSES
Some probably derived from Wasekan sediments.
Quartz-biotite-hornblende-plagioclase gneiss, locally sillimanitic. Includes much aplite material as stringers.
- 23 Stratiform granitoid paragneiss, locally sillimanitic; undifferentiated granite gneiss. Abundant pegmatite and aplite. Plagioclase amphibolite bands probably derived from lime-rich sedimentary bands. Commonly garnetiferous; locally anophyllite-bearing.
- 21 Conglomerate; arkose with pebble beds.
- 20 Feldspathic muscovite-biotite schist derived from arkose; much pegmatite.

UNCONFORMITY

- 12 Pink to buff biotite and hornblende granite.
- 11 Grey hornblende-biotite tonalite and granodiorite.
- 10 Grey hornblende-biotite diorite and quartz diorite.
- 9 Gabbro and hornblende.

WASEKAN SERIES

- 5 Plagioclase amphibolite derived from andesite and basalt; Minor interbedded sediments and pyroclastics.
- 4 Mainly impure quartzite; minor greywacke and pyroclastics.
- 3 Interbedded volcanic, sedimentary, and/or tuffaceous rocks.
- 2 Greywacke, quartzite, and derived quartz-biotite-hornblende-feldspar gneisses and schists; locally garnetiferous. Minor staurolite and sillimanite gneiss. Some undifferentiated pyroclastics and flows.

SYMBOLS

- Geological boundary approximate assumed doubtful
- Outcrop, or area of small outcrops
- Strike and dip of bedding inclined vertical top known overturned
- Strike and dip of schistosity or foliation inclined vertical Dip not reported
- Trace of axial plane: syncline, antiform
- Shear zone or fault, with direction of motion and plunge of linear features. known assumed
- Plunge of linear feature.
- Area of mixed or hybrid rocks
- Glacial Striae
- Esker
- Prospect pit, or trench
- Anomalous magnetic declination
- Rapids, Falls and portage (with length)
- Swamp or open muskeg
- Centre of aerial photograph

Magnetic declination 17°20' east at centre of sheet, 1950.
Decreasing 5 minutes 30 seconds annually.

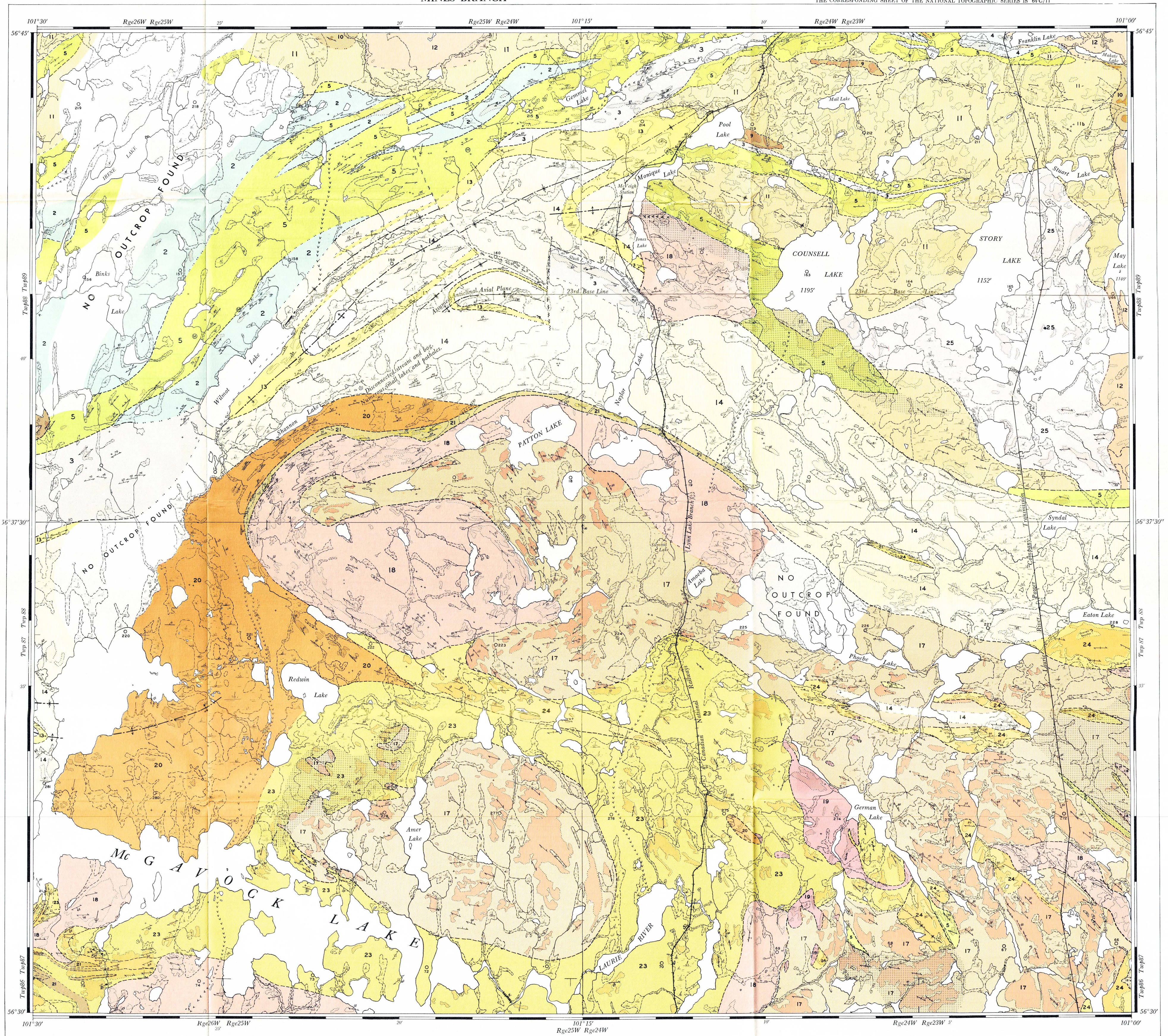
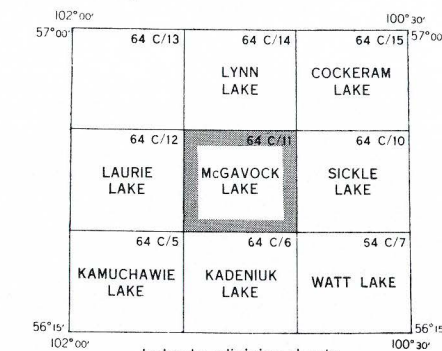
Geology by
G. C. MILLIGAN, 1957
Compiled from the field work of:
T. A. OLIVER, 1949-50
J. D. BATEMAN, 1941

Supplemented by maps and reports of exploration companies now, or formerly, active in the area.

To accompany Publ. 57-1

Aerial photographs numbered: A11064: 209-220; 154-167
A10944: 12-23; 65-76
A10943: 219-229; 271-282

provide complete stereographic coverage of this area, and are available from the National Air Photo Library, Ottawa.



Base map compiled from aerial photographs taken by the Royal Canadian Air Force in 1947, and from surveys by the Department of the Interior, Canada, and the Province of Manitoba.

McGAVOCK LAKE
GRANVILLE LAKE MINING DIVISION

